

LEE HEALTH COMMUNITY BENEFIT REPORT 2022

We Are Here for You

Lee Health has been caring for and responding to our community's needs for more than 100 years. This past year, despite its challenges, was no different, and we were able to show our patients, families and friends that we see you and we are here for you.

Using the Community Health Needs Assessment as our guide, together with our community partners we identified strategies to affect the overall health of Southwest Florida. Over the past year, we continued to focus on enabling access to the highest quality, compassionate care and finding ways to inspire healthier habits and behaviors.

Southwest Florida has our undivided attention, and this Community Benefit Report helps us illustrate that commitment and dedication. We will continue to find ways every day and night to show you that we see you, we celebrate you and we are here for you.



Donna Clarke
Chair, Board of Directors
Lee Health



Larry Antonucci, M.D., MBA
President & CEO
Lee Health

LEE MEMORIAL HEALTH SYSTEM BOARD OF DIRECTORS

DISTRICT ONE
Stephen R. Brown, M.D.
Therese Everly, BS, RRT

DISTRICT TWO
Donna Clarke
Nancy M. McGovern, RN, MSM

DISTRICT THREE
David F. Collins
David Klein, MBA

DISTRICT FOUR
Diane Champion
Dane Allen, JD

DISTRICT FIVE
Kathy Bridge-Liles, RN, MS
Daniel Adler, JD

Financial Report

	Total Overall	Lee Memorial Hospital	HealthPark Medical Center	Cape Coral Hospital	Gulf Coast Medical Center
Cost of Charity Care	\$82,473,231	\$25,520,024	\$15,475,146	\$12,824,190	\$28,653,870
Cost of Unpaid Medicaid	\$115,958,562	\$26,046,100	\$58,511,311	\$12,033,477	\$19,367,674
Total Value of Charity Care & Medicaid	\$198,431,793	\$51,566,124	\$73,986,457	\$24,857,667	\$48,021,544
Cost of Providing Community Benefit and Outreach	\$51,851,803	\$12,962,951	\$12,962,951	\$12,962,951	\$12,962,951
Total Charity Care, Means-Tested Programs, and Other Community Benefits	\$250,283,596	\$64,529,075	\$86,949,408	\$27,820,618	\$60,984,495
Less the Benefit of Taxes	\$84,865,829	\$19,799,298	\$20,145,776	\$20,221,925	\$24,698,840
Net Value of Community Benefit	\$165,417,767	\$44,729,777	\$66,803,632	\$17,598,703	\$36,285,655

- **Cost of Charity Care: \$82,473,231**
- **Cost of Unpaid Medicaid: \$115,958,562**
- **Cost of Providing Community Benefit and Outreach: \$51,851,803**
- **Cost of Unpaid Medicare: \$578,551,305**

*Since Medicare is not a means-tested program, it is not included in the overall total of Lee Health's community benefit expenditures.

- **Community health education through informational programs, publications and outreach activities in response to community needs: \$20,360,712**
- **Lee Community Healthcare low income clinics: \$12,206,438**
- **Residency Programs: \$10,644,886**

Cost of Charity Care

Charity care is free or discounted health services for patients who cannot afford to pay and meet the eligibility criteria of Lee Health's financial assistance policy. Reported costs, not charges.

Cost of Unpaid Medicaid

Government-sponsored healthcare includes unpaid costs of public programs for low-income patients - the shortfall created when Lee Health receives payments that are less than the cost of caring for public program beneficiaries.

Less the Benefit of Tax Exempt Status

Lee Health is a not-for-profit public hospital system. This calculation illustrates that our Community Benefit investments are six times greater than the dollar amount of taxes Lee Health would pay if it were a tax-paying entity.

Community Outreach

Lee Health invests in activities aimed to improve community health and extend beyond patient care.

- **Clinical Education:** Educational programs for physicians, interns and residents, medical students, nurses and nursing students, pastoral care trainees, and other health professionals for a degree, certificate, or training.
- **Community Donations:** Donated funds and in-kind services include staff hours to the community while on Lee health work time, the cost of meeting space provided to community groups and donations.
- **Community Health Promotion and Education:** Improve community health with programs and activities that extend beyond patient care. Examples include education, services and screenings, lectures and workshops, self-help programs and support services.

Cost of Unpaid Medicare

Government-sponsored healthcare community benefit includes unpaid costs of public programs such as Medicare for low-income adults and children - the shortfall created when Lee Health receives payments that are less than the cost of caring for public program beneficiaries.



Community Highlights

Healthy Lee

Healthy Lee is a countywide effort to improve the health of residents and the care delivery system. More than 300 organizations throughout Southwest Florida now actively contribute to Healthy Lee to improve our community's health and to create a culture of healthy lifestyles for people of all ages. The Healthy Lee Steering Committee through the findings of the triennial Community Health Needs Assessment (CHNA), identified our community's health needs and set the following priorities with active subgroups dedicated to impacting the following areas of need:



- **Healthy Lifestyles: Nutrition, Physical Activity, Weight and Diabetes**
- **Cardiovascular and Respiratory Health (chronic disease prevention/management)**
- **Behavioral Health and Substance Use Disorder**
- **Access to Health and Improve Health Literacy**



Healthy Minds - Mental Health on the Frontlines

This conference offers education and inspiration for frontline workers, who have shared their experiences with stress, anxiety, depression, and thoughts of self-harm. We identified resources and discussed areas for improvement through their own employee Mental and Behavioral Health service offerings.

Health Professions Education

Lee Health partners with colleges and universities to fuel training programs investing in our future workforce. Programs include training for nurses, APRNs, pharmacists, physicians, social workers, radiologists, lab scientists, and more.

- **\$14,971,684 community benefit**
- **373,897 staff hours**



Family Medicine & Internal Medicine Residency Programs

Sponsored by The Florida State University (FSU) College of Medicine in partnership with Lee Health. These residents are integrated into our clinical rotations and are committed to serving others with excellence and compassion.

- **\$10,644,886 community benefit**
 - **\$6,830,183 Family Medicine Residency Program**
 - **\$3,814,703 Internal Medicine Residency Program (year one)**

Community Care Outreach

Free support and resource guidance including health system navigation and managing chronic diseases, behavioral health, and food security.

- **\$170,116 community benefit**
- **4,504 staff hours**



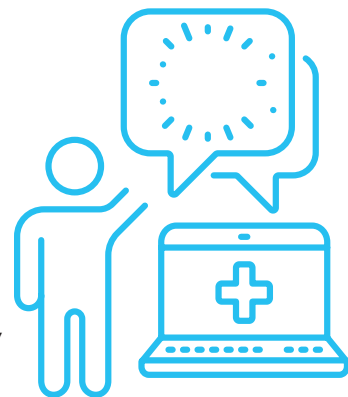
Food Surplus Distribution

HealthPark Medical Center donated surplus food to St. Mathews House, My Florida Families, and the Café of Life. This provides food to community members experiencing food insecurity.

Barbershop Wellness

Every month, residents from our Family Residency program, Lee Health pharmacists and pharmacy interns, nurses, and other staff join community members to bring our Barbershop Wellness program to Utopia Unisex Salon in the Dunbar community of Fort Myers. The team promotes community healthy habits while growing connections and offering support. This program is modeled after the six pillars of Lifestyle Medicine:

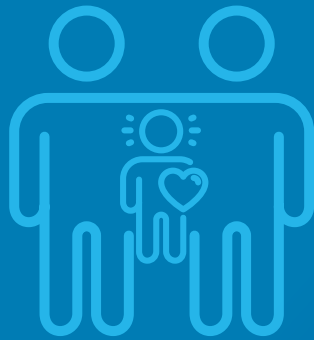
- **Plant-based diet**
- **Regular physical exercise**
- **Restorative sleep**
- **Stress management**
- **Positive social connections**
- **Avoidance of risky substances/behaviors**



Highlights include nutrition education, COVID vaccine information, seasonal flu vaccines, HIV education and testing, voter registration opportunities, safety awareness, fitness, and stress management breathing techniques.

Child Advocacy

Trained advocates at Golisano Children's Hospital provide injury prevention and education through the Child Advocacy program focusing on child passenger safety, medicine, drowning prevention, bike/prevention safety, and other risk areas. Advocates also teach CPR, Safe Sitter, and parenting classes.



- **\$665,723 community benefit**
- **23,219 staff hours**
- **14,368 people served**

STARS

STARS, Special Needs Tracking & Awareness Response System, identifies children with complex medical needs, provides care plans, and shares those plans with EMS if you ever need to call 911. To date, we have over 120 children enrolled with an average of three to four dispatches of care plans a month to first responders.

Kids' Minds Matter

Program includes eight mental health navigators who have served 208 families and 604 individuals. Of the families served, 90% have reduced their child's hospitalizations under the Baker Act. Children improved attendance and grades, parents increased employment, and families connected to more home services.



- **45 support groups were hosted for parents of children with mental health issues**
- **52 classes were taught, serving 7,109 individuals in the community**
 - **24 were Mental Health First Aid classes resulting in certifying 267 individuals in the community**

Injury Prevention

The Lee Health Trauma Center Injury Prevention Program provides community-based services, education, and training prevention of violence, bullying, substance abuse, motor vehicle crashes, sports injuries, falls, and more. We also offer mentor programs and support groups.

- **\$77,551 community benefit**
- **768 staff hours**
- **301,421 people served**

TeleHealth

Lee Health eliminated the costs of our 24/7 Lee TeleHealth platform to encourage telemedicine usage during unprecedented times.



To find out more:
leehealth.org/our-services/telemedicine

- **\$444,577 community benefit**
- **9,410 people served**

Lee Community Healthcare

Lee Community Healthcare (LCH) has 31 facilities throughout Lee and Charlotte County that provide primary medical care to medically uninsured and economically distressed communities. Teams are committed to providing a medical home to those that have historically used local emergency rooms to meet their primary care needs.

- **\$12,206,438 community benefit**

