

2018 Community Benefit Report



LEE HEALTH



Purposeful Partnerships - Improving Lives in our Community

Lee Health has served our community for more than 100 years. We have been and continue to be committed to helping you, your family and your friends adopt habits that enable you to achieve your best health and live your best life.

As our community's major health care destination, we know that improving health and wellness takes more than just providing access to doctors and health care providers. There are social determinants of health, like having safe shelter, reliable transportation, healthy food and safe neighborhoods that impact overall well-being. We invest significantly in community partnerships so that we can more effectively impact these social barriers to health.

Additionally, we continue to invest in modern facilities and life-saving technology so our dedicated and talented staff can bring leading-edge medicine and medical procedures to the community. At the same time, we are focusing on ways we can help you outside of the hospital and physician offices by encouraging and inspiring you to choose nutritious foods, engage in regular physical activity, proactively manage any chronic diseases and keep safety top-of-mind.

This year's Community Benefit Report provides insights into some of the leading-edge services and programs that Lee Health offers everyone in our community. It also highlights the ways we collaborate with other local organizations to help improve the overall health of Southwest Florida residents.

We aim to live our mission of being a trusted partner, empowering healthier lives through care and compassion every day and night. We believe doing so will help you strengthen your health status and avoid future unnecessary illness, injury and pain. We are proud of our history of caring and our team's devotion to our mission, and we look forward to competently and compassionately serving our community as caring people, inspiring health.



Stephen R. Brown, M.D.
Chairman, Board of Directors
Lee Memorial Health System



Larry Antonucci, M.D., MBA
President & CEO
Lee Health

LEE MEMORIAL HEALTH SYSTEM BOARD OF DIRECTORS

District 1
Stephen R. Brown, M.D.
Therese Everly

District 2
Donna Clarke
Nancy M. McGovern, RN, MSN

District 3
Sanford Cohen, M.D.
David F. Collins

District 4
Chris Hansen
Diane Champion

District 5
Jessica Carter Peer
Stephanie L. Meyer, BSN, RN

Our Mission:

To be a trusted partner, empowering healthier lives through care and compassion

Our Vision:

To inspire hope and be a national leader for the advancement of health and healing

2018 Community Benefit Report

	TOTAL Lee Health	Lee Memorial Hospital	HealthPark Medical Center	Cape Coral Hospital	Gulf Coast Medical Center
Cost of Charity Care	\$63,592,415	\$23,549,549	\$11,515,523	\$12,744,168	\$15,783,175
Cost of Unpaid Medicaid	\$91,448,892	\$20,780,989	\$42,786,422	\$11,871,630	\$16,009,851
Cost of Unpaid Medicare	\$256,606,632	\$59,674,352	\$65,169,830	\$53,112,873	\$78,649,578
Total Value of Charity, Medicaid, Medicare	\$411,647,939	\$104,004,891	\$119,471,775	\$77,728,670	\$110,442,603
Cost of Providing Community Benefit and Outreach	\$58,444,966	\$14,611,241	\$14,611,241	\$14,611,241	\$14,611,241
Total Charity Care, Government-Sponsored Programs and Other Community Benefits	\$470,092,905	\$118,616,132	\$134,083,017	\$92,339,912	\$125,053,845
Less the Benefit of Taxes	\$52,890,551	\$13,160,974	\$14,167,214	\$12,219,665	\$13,342,699
Net Value of the 2018 Community Benefit	\$417,202,354	\$105,455,158	\$119,915,803	\$80,120,247	\$111,711,146

Cost of Charity Care

Charity care is free or discounted health services provided to patients who cannot afford to pay and who meet the eligibility criteria of Lee Health's financial assistance policy. Financial assistance is reported in terms of costs, not charges.

Cost of Unpaid Medicaid

Government-sponsored health care community benefit includes unpaid costs of public programs for low-income patients — the shortfall created when Lee Health receives payments that are less than the cost of caring for public program beneficiaries.

Cost of Unpaid Medicare and other Government Programs

Government-sponsored health care community benefit includes unpaid costs of public programs such as Medicare and for low-income persons and children — the shortfall created when Lee Health receives payments that are less than the cost of caring for public program beneficiaries.

Less the Benefit of Tax Exempt Status

Lee Health is a not-for-profit public hospital system that does not pay taxes and does not receive taxpayer revenue. This calculation illustrates that Lee Health's total Community Benefit investments are six times greater than the dollar amount of taxes Lee Health would pay if, in theory, it was a tax-paying entity.

Community Outreach

These activities are carried out to improve community health, extend beyond patient care activities and are subsidized by Lee Health.

- **Clinical Education:** This category includes educational programs for physicians, interns and residents, medical students, nurses and nursing students, pastoral care trainees, and other health professionals when that education is necessary for a degree, certificate, or training that is required by state law, accrediting body or health profession society.

- **Community donations:** This category includes funds and in-kind services donated to community organizations or to the community at large for a community benefit purpose. In-kind services include hours contributed by staff to the community while on Lee Health work time, the cost of meeting space provided to community groups; and the donations of food, equipment, and supplies.

- **Community health promotion and education:** These activities are carried out to improve community health, extend beyond patient care activities, and are subsidized by the health care organization. Specific community health programs and activities include: Community health education; community-based clinical services, such as health services and screenings for underinsured and uninsured patients; health education lectures and workshops by staff to community groups; health promotion and wellness programs, self-help programs, such as smoking cessation and weight loss programs; and health care support services, such as enrollment assistance in public programs.

Unpaid Cost of Medicaid and Other Means Tested Government Programs = \$348M

Unpaid Cost of Charity Care = \$63.6M

Community Benefit Programs/Services = \$58.4M

- Community health education
- Community-based clinical services
- Health care support services
- Health professions education
- Subsidized health services

Community health education through informational programs, publications, and outreach activities in response to community needs = \$32.6M

- health education
- community clinical services
- health care support services
- health professions education
- cash and in-kind contributions

Lee Community Healthcare low income clinics = \$11.3M

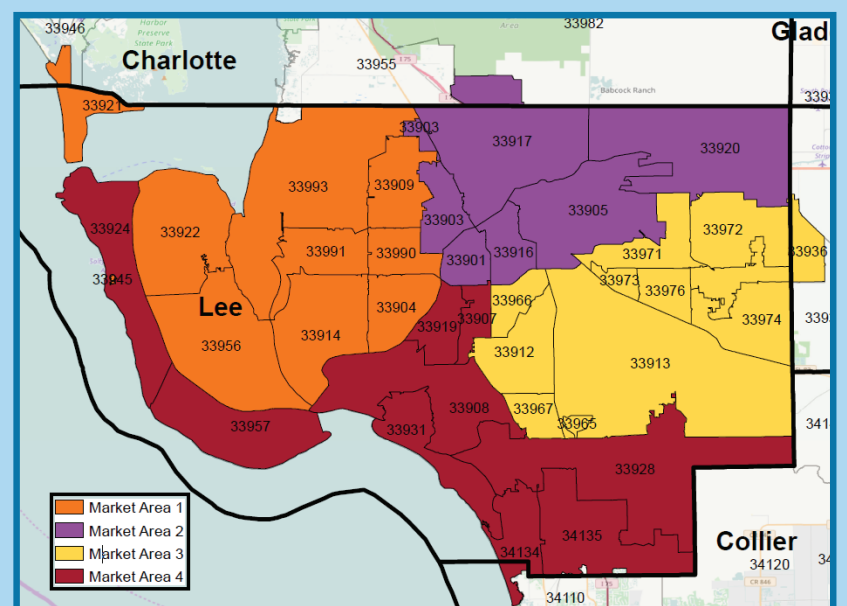
Community Triage Center = \$251.3K

Residency Program = \$2.4M

- Research
- Financial and in-kind donations
- Community benefit operations

- economic development
- community support
- workforce development

Lee County



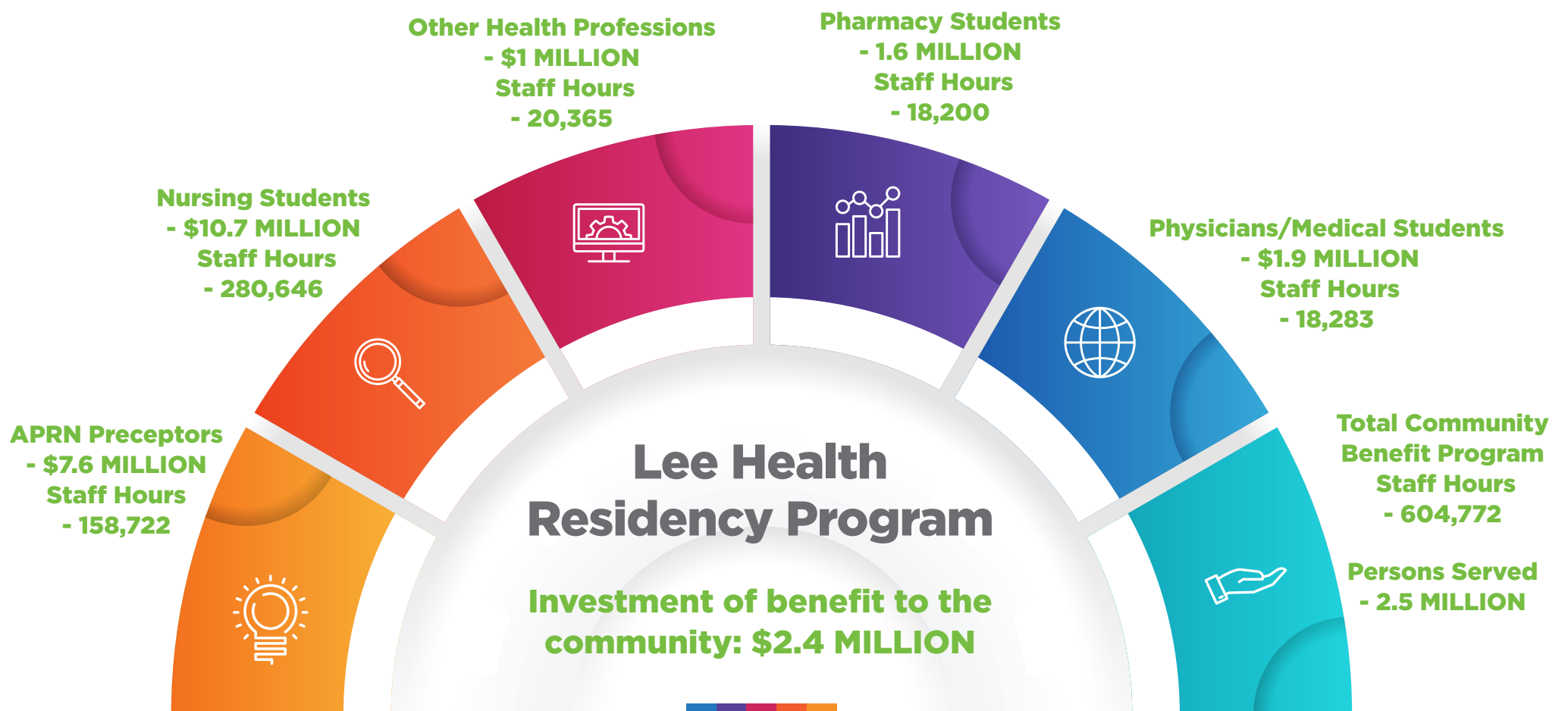
Teaching the Health Professionals of Tomorrow

Family Medicine Residency Program (In Partnership with Florida State University Medical School)

The Family Medicine Residency Program is sponsored by The Florida State University (FSU) College of Medicine in partnership with Lee Health in Fort Myers, Florida. Lee Health is a designated site for primary care resident physician rotations. These residents will be integrated into our clinical rotations, and this will enhance their development as teachers and ambassadors of family medicine.



Health Professions Education



Respect: We respect you, your life and your health care choices. We respect one another as colleagues, caregivers and people.

Excellence: We strive for excellence in everything we do. We uphold the highest standards of safety and quality, deliver an exceptional experience to our patients, and manage our resources responsibly.

Compassion: We care for your family like our own. We truly embody, “caring people, inspiring health.”

Education: We support education to continuously improve ourselves, develop an effective workforce and empower healthier lifestyles throughout our community.

Any questions regarding this publication please contact stephanie.wardein@leehealth.org