

Resilience and Rising to Meet the Challenge

There is no doubt that 2020 was a challenging year for all of us.

While it was a year no one wants to revisit, we look back on it with immense respect for all the ways our Lee Health teams worked together to respond to the pandemic.

In this report, we hope you will gain insight into how we care for our community and work with local partners to improve the overall health of Southwest Florida.

Community Benefit Report 2020

Putting the Community First During COVID-19

Early in the COVID-19 fight, the **Lee Health Outreach Team** quickly pivoted to offer community health education classes and virtual support groups. Their efforts equate to an investment of \$59.1 million worth of health outreach directly into the community.



Our **Information Systems team** expanded Lee TeleHealth technology from five departments to more than 60, so thousands of patients could see a doctor from the safety of their own home.

Lee Community Healthcare clinics increased its patients by safely serving as a medical home for men, women, and children who are uninsured and economically distressed.

No matter the challenge, **Lee Health works to be a trusted partner**, empowering healthier lives with care and compassion. Through the passion of our health care heroes, we're perpetuating our legacy of providing safe, exceptional care every day and night.



David F. Collins
Chairman, Board of Directors
Lee Memorial Health System



Larry Antonucci, M.D., MBA
President & CEO
Lee Health

LEE MEMORIAL HEALTH SYSTEM BOARD OF DIRECTORS

District 1
Stephen R. Brown, M.D.
Therese Everly

District 2
Donna Clarke
Nancy M. McGovern, RN, MSN

District 3
Sanford Cohen, M.D.
David F. Collins

District 4
Chris Hansen
Diane Champion

District 5
Kathy Bridge-Liles, RN, MS
Stephanie L. Meyer, BSN, RN



2020 Community Benefit Report

	Total Overall	Lee Memorial Hospital	HealthPark Medical Center	Cape Coral Hospital	Gulf Coast Medical Center
Cost of Charity Care	\$72,800,078.29	\$29,172,232.70	\$11,811,182.75	\$14,363,297.21	\$17,453,365.64
Cost of Unpaid Medicaid	\$77,425,352.13	\$16,869,982.63	\$35,359,484.47	\$11,613,148.21	\$13,582,736.82
Total Value of Charity Care & Medicaid	\$150,225,430.42	\$106,876,028.03	\$118,071,262.32	\$84,392,057.07	\$115,340,750.29
Cost of Providing Community Benefit and Outreach	\$59,129,395.68	\$14,782,348.92	\$14,782,348.92	\$14,782,348.92	\$14,782,348.92
Total Charity Care, Means-Tested Programs, and Other Community Benefits	\$209,354,826.10	\$121,658,376.95	\$132,853,611.24	\$99,174,405.99	\$130,123,099.21
Less the Benefit of Taxes	\$68,962,392.88	\$17,049,708.88	\$18,392,577.81	\$16,047,792.93	\$17,472,313.26
Net Value of Community Benefit	\$140,392,433.22	\$104,608,668.08	\$114,461,033.42	\$83,126,613.06	\$112,650,785.95

Cost of Unpaid Medicare

Government-sponsored healthcare programs, such as Medicare, contribute to the story of Lee Health's community benefit investment. Since Medicare is not a means-tested program, it is not included in the overall total of Lee Health's community benefit expenditures.

Less the Benefit of Tax Exempt Status

This calculation illustrates that Lee Health's total Community Benefit investments are six times greater than the dollar amount of taxes Lee Health would pay if, in theory, it was a tax-paying entity.

Community Outreach

These activities are carried out to improve community health, extend beyond patient care activities and are subsidized by Lee Health.

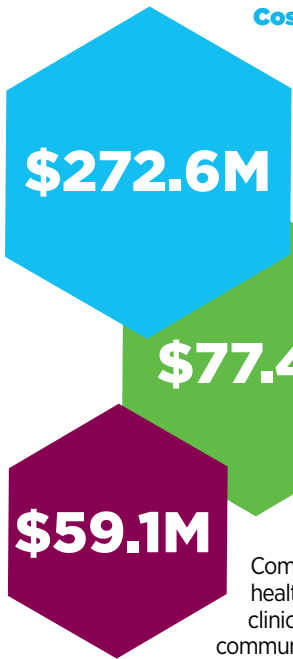
- **Clinical Education:** This category includes educational programs when that education is necessary for a degree, certificate, or training that is required by state law, accrediting body or health profession society.
- **Community donations:** This category includes funds and in-kind services donated to community organizations or to the community at large for a community benefit purpose. In-kind services include hours contributed by staff to the community while on Lee Health work time, the cost of meeting space provided to community groups; and the donations of food, equipment, and supplies.
- **Community health promotion and education:** These activities are carried out to improve community health, extend beyond patient care activities, and are subsidized by the health

Cost of Unpaid Medicaid

Government-sponsored healthcare community benefit includes unpaid costs of public programs for low-income patients.

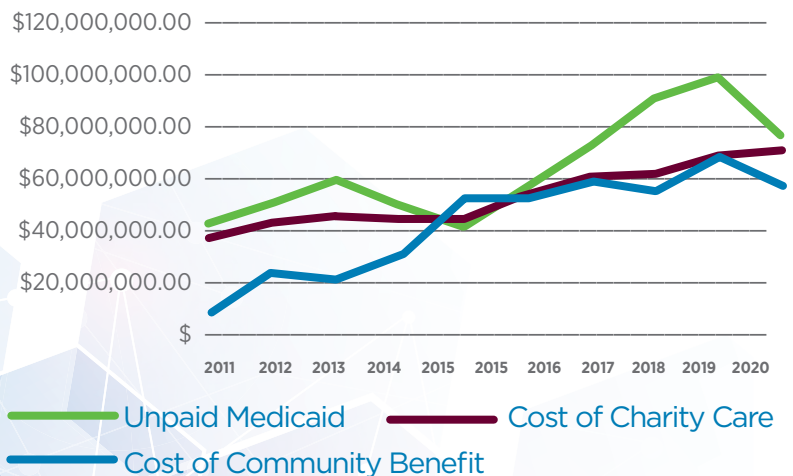
Cost of Providing Community Benefit and Outreach

Community benefit outreach costs include health improvement initiatives such as clinical education, community donations, and community health promotion and education.



Over the past 10 years, as the need for quality healthcare increases in our community, **Lee Health has invested more in community benefit outreach services.**

Lee Health Cost of Charity Care, Unpaid Medicaid, and Providing Community Benefit and Outreach



To Find Out More

Leehealth.org/community-affairs

COVID-19 SPECIAL FEATURE

Outreach Goes Virtual!

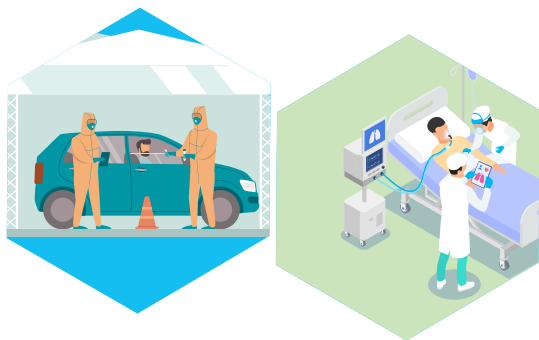
The Lee Health Outreach Team of over 100 Lee Health clinicians and experts transitioned their services to virtual platforms, offering virtual support groups, cooking classes, fitness classes, meditation, community health education webinars, and more.

\$59.1M cost of providing community benefit and outreach



Thank You, Southwest Florida!

Thank you to our generous community for the unwavering support during COVID-19. The many donations of personal protective equipment, meals, and thank you notes lifted the spirits of our frontline staff. **We appreciate our community for helping to slow the spread by wearing a mask, physically distancing, and practicing good hand hygiene.**



Keeping Us in the Know

Lee Health's Strategic Communication and Marketing teams worked diligently to provide daily updates to ensure the community was well-informed. Several virtual Town Hall events via Facebook Live to address questions from the community helped to get our community's questions answered.

\$325,844 community benefit

9,680 staff hours

15,000 people served

Virtual Visits to the Doctor

To better encourage telemedicine during COVID-19, Lee Health eliminated the cost of our 24/7 Lee TeleHealth platform. 7,200 virtual visits were provided at no cost—a \$350,000 community benefit value in a just a few months. We extended this platform to our friends at NCH Healthcare System to maximize community impact.



\$350,000 community benefit

7,200 people served



www.leehealth.org/our-services/telemedicine



Community Care Outreach

Community Care Outreach provides free support and resource guidance to eligible patients, including navigating the health system and managing health needs such as chronic diseases, behavioral health, and food security.

\$411,439 community benefit

11,881 staff hours

To Find Out More

www.leehealth.org/our-services/lee-community-healthcare

Health Professions Education

Lee Health's partnerships with regional colleges and universities feed Lee Health's healthcare training programs with future nurses, advanced practice registered nurses, pharmacists, physicians, social workers, radiologists, lab scientists, and more.



\$17,023,265 community benefit

383,909 staff hours

22,438 people served

Lee Community Healthcare

Lee Community Healthcare (LCH) has 13 facilities throughout Lee and Charlotte counties that provide primary medical care to medically uninsured and economically distressed communities. LCH patient care teams are committed to providing a medical home to those individuals that have historically used local emergency rooms to meet their primary care needs.



\$14,916,806 community benefit

33,477 individuals served

105,000 total office visits

Injury Prevention

The Lee Health Trauma Center Injury Prevention Program provides community-based services, education, and training prevention of violence, bullying, substance abuse, car accidents, sports injuries, falls, and more. Mentor programs and support groups are also offered for community members suffering from traumatic injuries and events.



\$81,646 community benefit

533 staff hours

203,105 people served

To Find Out More

www.leehealth.org/our-services/trauma-care

Child Advocacy

Trained advocates within Golisano Children's Hospital of Southwest Florida's Child Advocacy Program provide parent and pediatric services and education, including Safe Sitter classes, car seat inspections, water safety presentations, children's behavioral health services, and more.



\$170,079 community benefit

8,353.5 staff hours

95,746 people served

To Find Out More

www.leehealth.org/our-services/child-advocacy

To learn what Lee Health is doing for the community visit LeeHealth.org/community-affairs